

MOUNT WILLIAM STATION
— SINCE 1842 —



2026/2027

WEDDINGS



CONGRATULATIONS!

We are delighted you're considering Mount William Estate as your dream wedding venue. Being able to celebrate love with the people who mean the most to you, can only be enhanced by being able to do so in a unique and idyllic location.

The Abbott & Barr Smith Family and Friends have enjoyed this special place for over a century. For the first time in 160 years, Mount William Station is now open to host weddings outside of the family. A truly unique opportunity to make this incredible destination your home to experience and enjoy with you nearest and dearest.

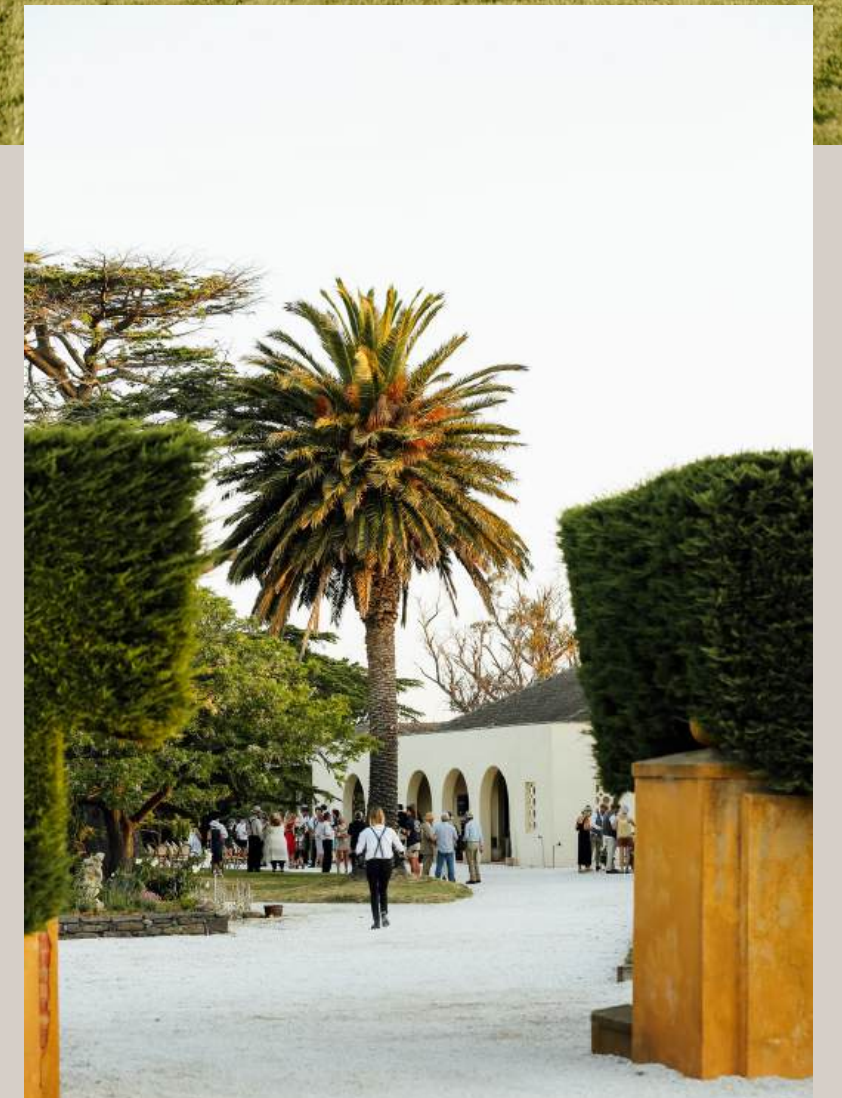
@MOUNTWILLIAMSTATION

ABOUT MOUNT WILLIAM STATION

Mount William Station is one of the oldest settlements in Victoria, set at the foothills of the picturesque Grampians National Park.

The property was originally established in 1842 and since then has been a place of sanctuary for generations – a place to pause, to enjoy with family & dearest friends, to take your mind to a different era.

The property offers rich green pastures in winter and sun swept paths in summer, the quintessential Australian landscape.





PLANNING YOUR

WEDDING AT MOUNT WILLIAM

A DESTINATION WEDDING VENUE



With 7500 majestic acres and luxury accommodation for up to 35 guests on-site, the sheer size to host up to 300 wedding guests, versatility and plethora of picturesque locations that Mount William Station offers makes it a truly unique destination Wedding Venue in one of Victoria's most majestic regions – the Grampians.

Whether you require a relaxed and informal wedding reception, large group experience or cocktail experience, we can accommodate all styles and budgets.

All of our weddings are uniquely curated to suit you. You can choose to keep it simple or style any of our spaces to create your dream day. We have a great list of preferred suppliers and an exceptional on-site team to assist in creating your perfect day.

CEREMONY AREAS



FRONT LAWN / ARCHES



SIDE LAWN



GARDEN HEDGES

RECEPTION AREAS



BLUESTONE STABLES

The newly open events space at the historic Bluestone Stables offers a wet weather option and a sitting arrangement for up to 150 guests.



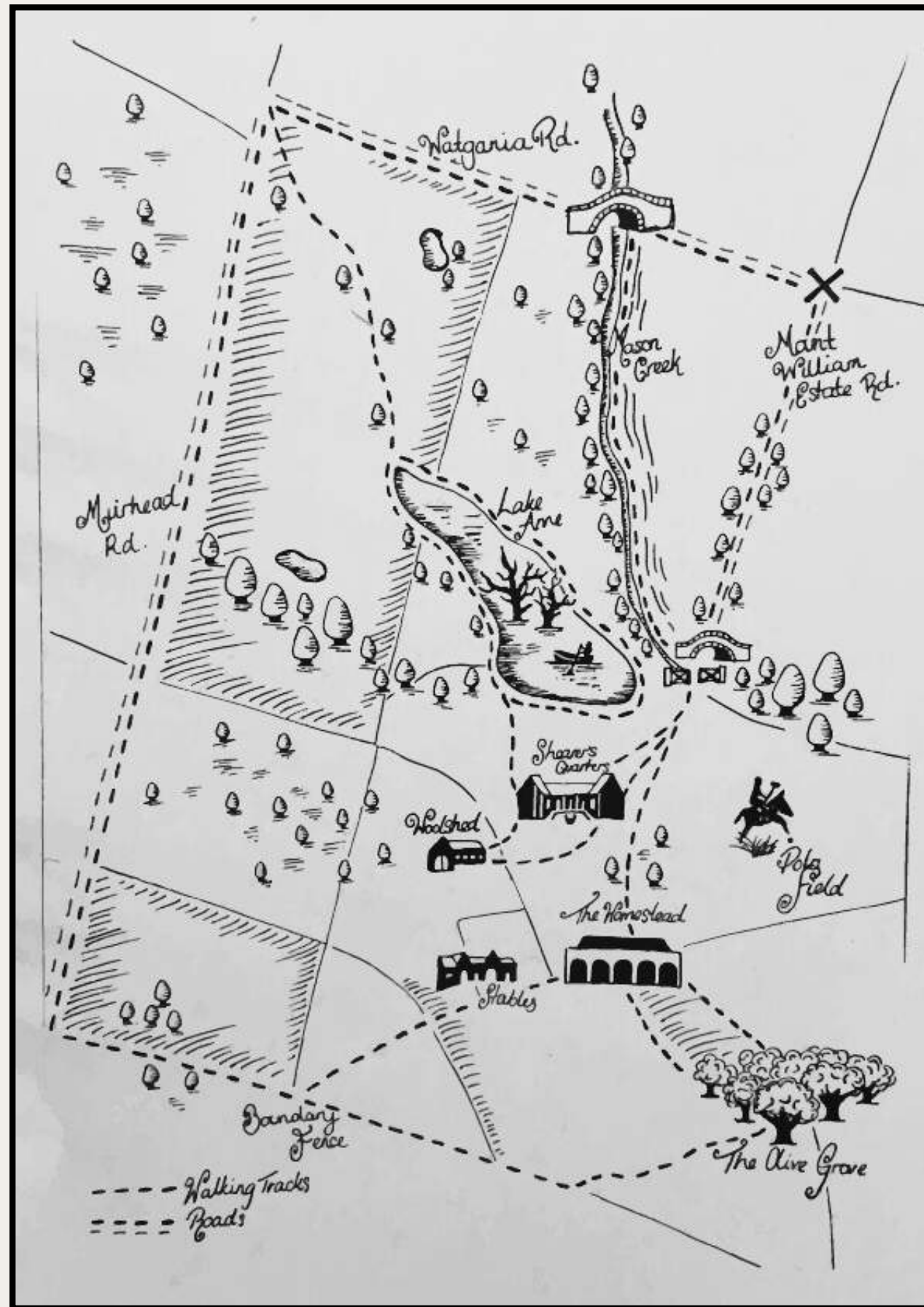
GARDEN

Make your open-air dream come true in front of the stunning Grampians backdrop - or get a marquee to provide a weather-safe option for your guests.



MOUNT WILLIAM STATION

THE GROUNDS



Mount William Station, established in 1842, was among Victoria's earliest pastoral holdings. Its colonial-style bluestone wool shed, built during the mid-1800s wool boom, is one of seven in Australia, recognized by the National Trust. Acquired by Robert Barr Smith in 1919, it later passed to his son R.M. Anne Eda Barr Smith inherited and consolidated the property to 7,500 acres. Her children, Robert and Sybil, now manage the mixed-use farm, while her son Will focuses on converting the historic buildings into a luxury farm hotel.



THE GROUNDS



@MOUNTWILLIAMSTATION

THE HOMESTEAD

The Homestead is a refurbished 19th Century heritage building set amongst five-acres of rolling English gardens.

Exuding old world charm in a magical setting, the grounds of the Homestead include a stunning pool and sauna, rose garden, lawn tennis court, and bluestone stables.

Inside, the halls of the Homestead overflow with decades of storytelling and filter into spacious entertaining spaces and luxury bedrooms accommodating 12-18 guests.

@MOUNTWILLIAMSTATION

ARCHES

The stunning Spanish inspired arches front the Homestead, offering the perfect space to host an arrival dinner, wedding ceremony, or group breakfasts for up to 60 people.



@MOUNTWILLIAMSTATION

THE POOL

Bordering the tennis court with a small entry gate, the pool is the perfect place to relax and recover. Outdoor sun lounges and a six seat table are available for your use along with a pool house that features a dry sauna, a small bathroom, and kitchen/bar, offering the necessary facilities to host an enjoyable recovery event.



@MOUNTWILLIAMSTATION

GOLF CHIPPING COURSE

Adjacent to the front lawn and outdoor pool is where the six-hole chipping course can be found. Practice your swing with a friendly round of golf between friends and family or utilize the space for welcome drinks.

FRONT LAWNS

@MOUNTWILLIAMSTATION

Five acres of perfectly manicured gardens surround the Homestead framed by expansive hedges and century old palms. With lush established trees spotted throughout.

The Lawns offer an abundance of beautiful natural backdrops to set the scene for your alter during the ceremony and a vast open space to produce your dream reception whether it be cocktail style, inside a stunning enclosed marquee, or an open long table lunch or dinner. The expansive space is also very suitable to host a great recovery day with the trees providing ample shade, bar infrastructure on-site, and many fun lawn games to entertain guests.



FRONT LAWNS

@MOUNTWILLIAMSTATION



TENNIS COURT

A full mod-grass tennis court and equipment is supplied for you to enjoy a match during your stay.

Alternatively, the space can be transformed into stunning wet-weather reception plan housing a marquee and flooring with kitchen facilities nearby.

The court can also be utilised as an extended pool entertaining space through installation of couches or outdoor furniture and pop-up bars.



@MOUNTWILLIAMSTATION

THE ROSE GARDEN

Lots of beautiful roses fill our century old award-winning rose garden surrounded by a three-metre-high hedge that creates a boundary around the entire Homestead. The rose garden is the perfect backdrop to capture romantic memories with your loved one on your special day.



@MOUNTWILLIAMSTATION

THE BLUESTONE STABLES

Our newest event space at the Bluestone Stables offers seating for up to 150 guests, making it the perfect choice for your own big day.

It incorporates two courtyards, a fully equipped bar, a dining room, and a rustic dining hall featuring large sliding glass doors with heating and cooling for year-round comfort.



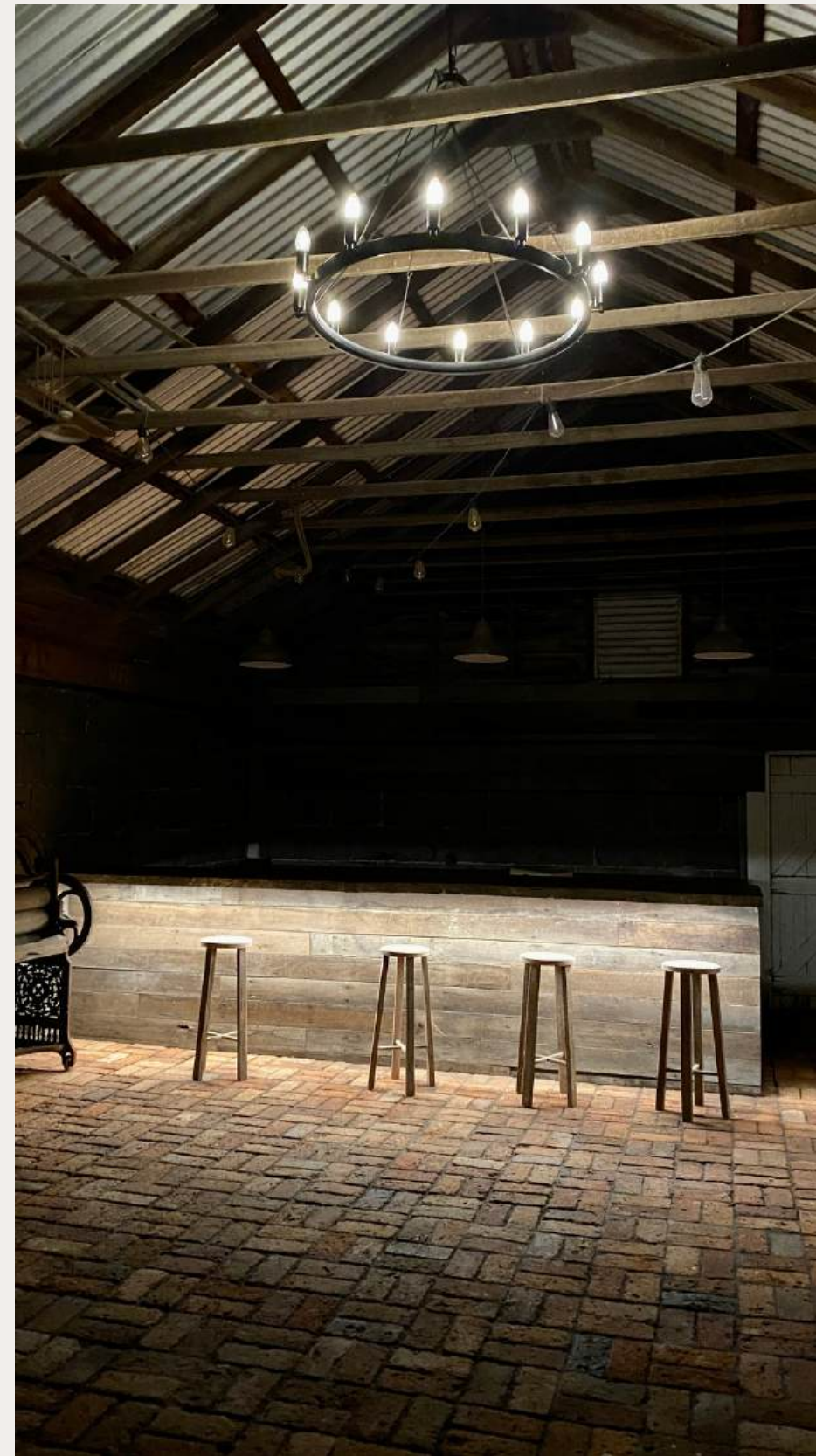
THE BLUESTONE STABLES

@MOUNTWILLIAMSTATION



THE BLUESTONE STABLES

@MOUNTWILLIAMSTATION





OLIVE GROVE

A picturesque location for photos during sunset, casual drinks for wedding guests, or a private glamping playground.



THE WOOL SHED

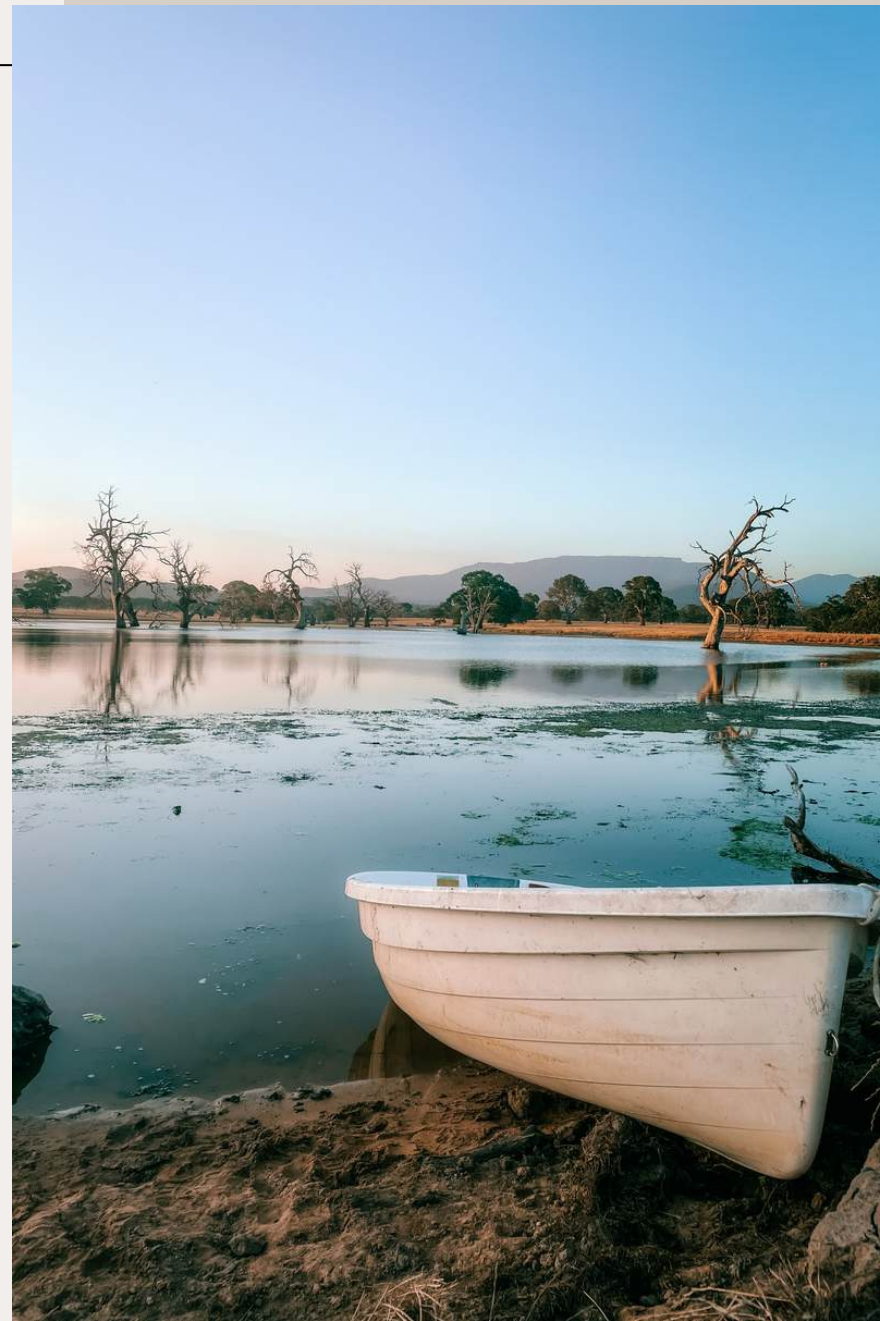
Built from imported Oregon pine and Port Fairy Bluestone in the 1860's, the frontage of our heritage listed wool shed provides a great opportunity for photos for those who are wanting to capture the authentic beauty and history of our farm.

LAKE ANNE

Located behind the Shearers Quarters and Shearing Shed, Lake Anne is a majestic setting to utilise.

In the warmer months, furniture can be imported and set up on the banks for recovery, a marquee for a reception, or even as a backdrop for your alter during the ceremony.

The lake is filled with trout and a small row-boat is available for use. We also encourage you to bring your own watercrafts such as kayaks to extend the activities on offer for your guests.



GUEST COMFORT

ACCOMMODATION & FACILITIES





HOMESTEAD FACILITIES

The Homestead is fully equipped to cater* for your occasion with staying guests permitted full access to all facilities which include:

- Private executive chef
- Six ensuite bedrooms
- Two sitting rooms
- Formal dining room
- Open modern country kitchen
- New commercial kitchen space
- Swimming pool & sauna
- Tennis court
- Outside exercise area
- Golf chipping course
- Lake access and fly fishing
- Commercial ice machine
- Farm walking tracks (seasonal)
- Helicopter pad

*In-house catering available for groups up to 35 guests.
Catering is excluded from the pricing.

@MOUNTWILLIAMSTATION



@MOUNTWILLIAMSTATION

THE RHINO ROOM

Deriving its name from the antique leather Rhino that has resided in the room for over a century, our stunning Rhino Room features an antique 1890's piano, a historic library shelf, and original fireplace. Providing the perfect place to sit back, relax, or entertain in comfort.

THE GREEN ROOM

The recently restored Green Room is a stunning feature of the Homestead. Antique furniture and collectables fill the space offering a luxurious location for the bridal party to leverage for pre-wedding drinks or a glam room for the bridesmaids. The furniture can also be removed allowing an additional space to be utilised as an alternative dining solution for small groups.





@MOUNTWILLIAMSTATION

THE DINING ROOM

Maintaining its original condition with an art-deco etched pattern ceiling and original light fittings, our stunning dining room with a large hardwood table, accommodates up to 14 guests. The room can be utilised for breakfast, arrival, or small group dinners.

@MOUNTWILLIAMSTATION

THE HOMESTEAD

The Homestead boasts six large luxury bedrooms with ensuite bathrooms and stylishly appointed designer furniture.

There are 6 extra beds available to add to some of the larger rooms if required.

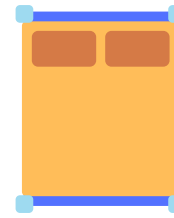
 Sleep 12-18



THE HOMESTEAD

Back of House

Guest Areas



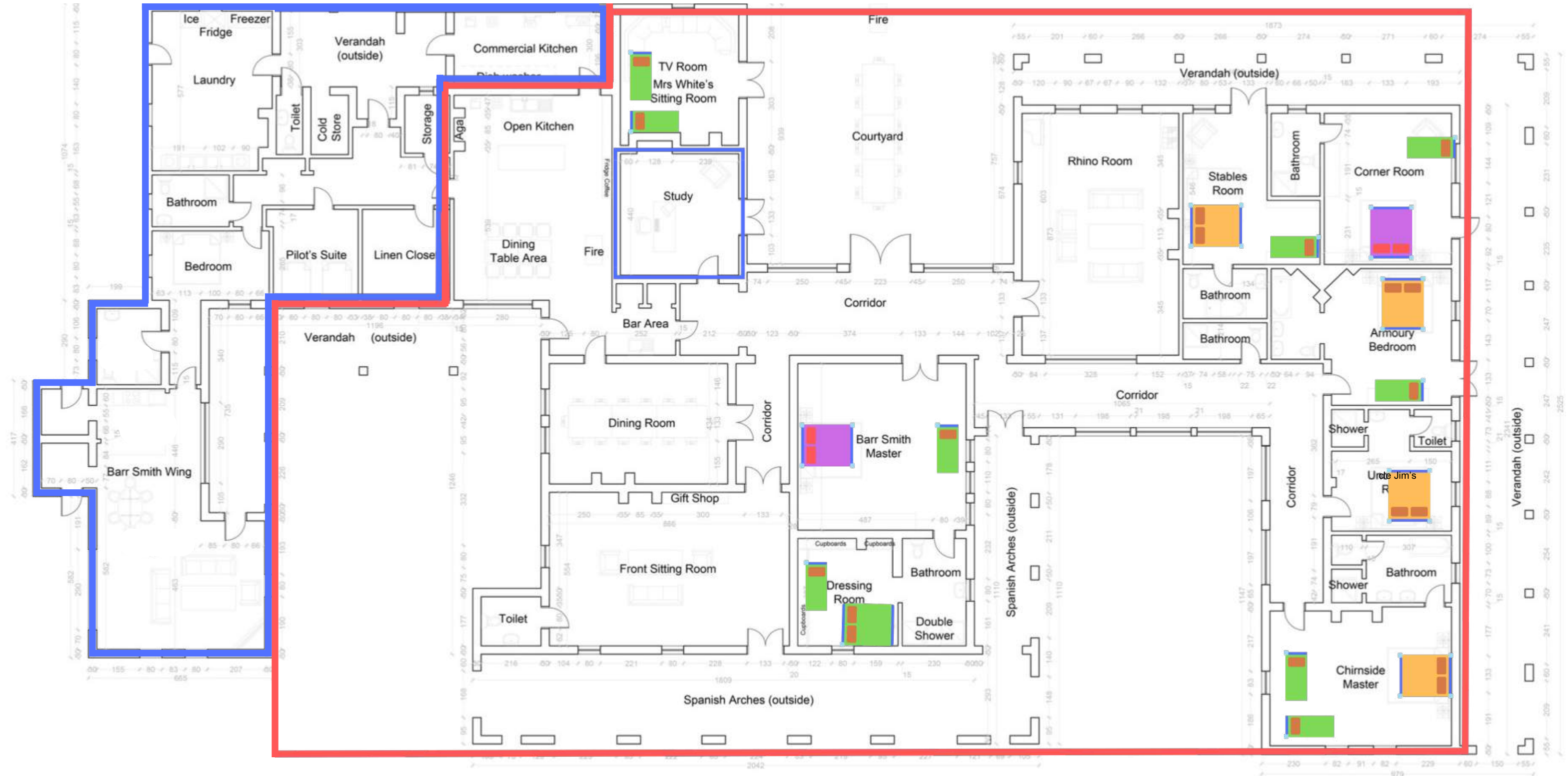
DOUBLE



DOUBLE or TWO SINGLES



SINGLE ROLLAWAY BED POSSIBILITY (max 6)





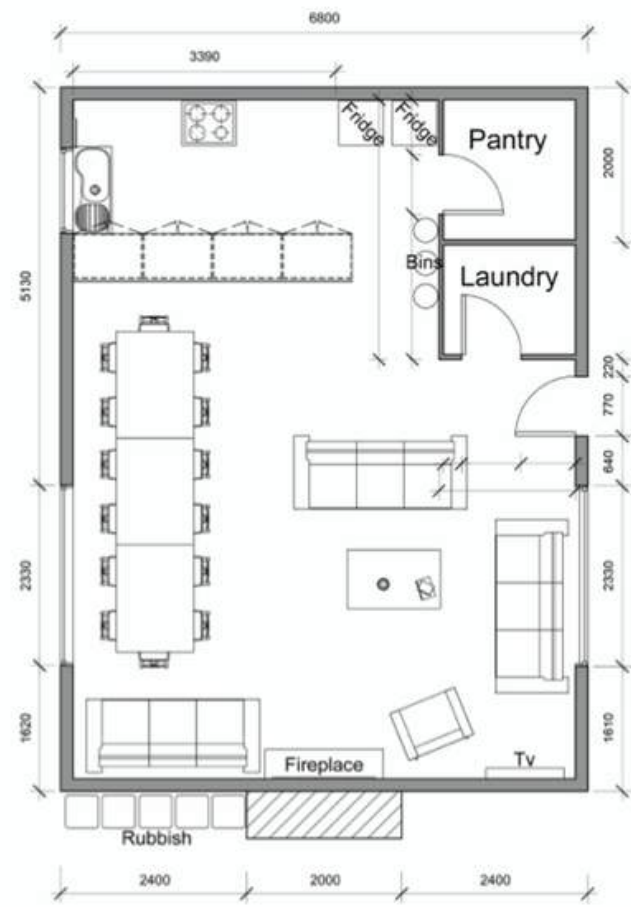
SHEARERS QUARTERS

The refurbished Shearers Quarters is complete with eight bedrooms, three bathrooms, a sun-soaked courtyard, a large communal kitchen and living room, a barbecue, fire pit, and lake access.

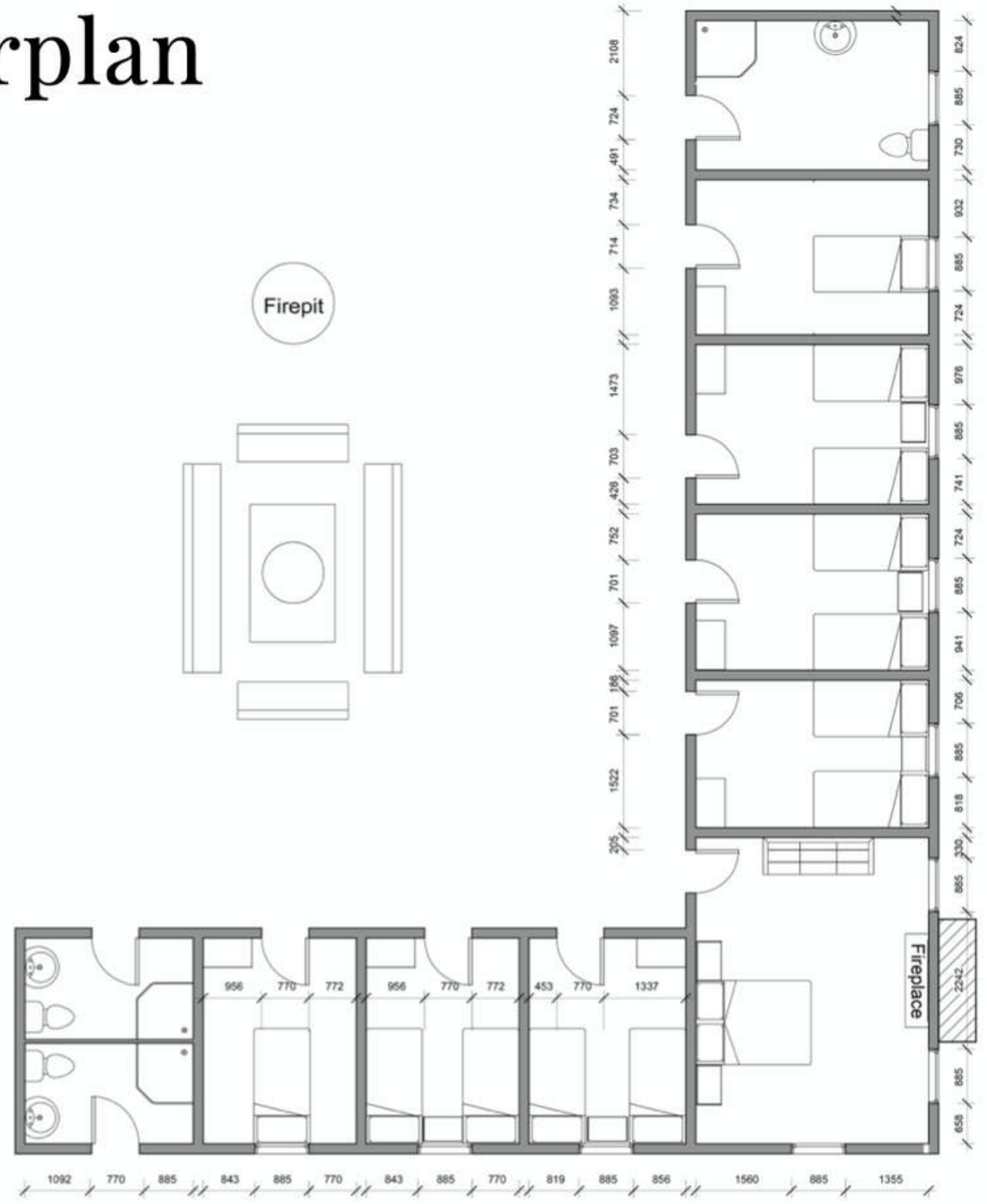
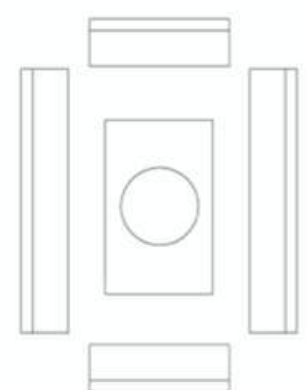
- Lake access
- Indoor fireplace
- Outdoor fireplace
- Free parking on premises
- Fresh linen & towels
- Dishes and cutlery
- Oven
- Stove
- Microwave
- Coffee maker
- Refrigerator
- Hot water
- Fire extinguisher
- Smoke detector
- First aid kit

 Sleeps: 17

Shearer's Quarters Floorplan



Firepit



Additional Accommodation

GLAMPING VILLAGE

To extend on-site accommodation options for wedding guests, we can facilitate a luxury glamping village on-site.

Our glamping partners can provide range of beautifully styled bell tents that accommodate singles, couples, groups, and families.

The tents will include luxury interiors with queen bed or singles, linen, towels, cushions, rugs, blankets, and a rechargeable warm light USB lantern.

Guests will simply need to arrive with their bags. With set up, pack up, washing of linen, and cleaning all provided.

Please note that a glamping set up requires bathroom and showering facilities.

Our glamping fee (covers maintenance of the area): \$30pp

Please inquire via our trusted partners:

[Twilight Event Hire](#)

[Swell Shelter](#)

@MOUNTWILLIAMSTATION





OFF-SITE ACCOMMODATION

From camping under the stars, to cosy cabins and five-star accommodation - the Grampians offers an array of accommodation options to cater for your guests.

Recommended options within about 35 min drive include:

[The Royal Mail Hotel, Dunkeld *](#)

[Acquila Eco Lodges](#)

[Boroka Downs](#)

[Grampians Park Station](#) (20 min from us)

[Red Gum Cottage](#) - (800m from us).

*Please enquire with us if you would like to request a special room-only rate instead of the catering that is normally included with the room rate.



FURNITURE & INFRASTRUCTURE



We have a large list of local and regional suppliers for furniture and infrastructure. However, we understand everyone has a unique taste and style so you are most welcome to seek alternative suppliers who our event team will happily work with to arrange set-up and delivery. Please see our separate vendors list, several preferred suppliers include:

[Twilight Event Hire](#)

[Pure Vibe Event Hire](#)

[Ensuites 2U](#)

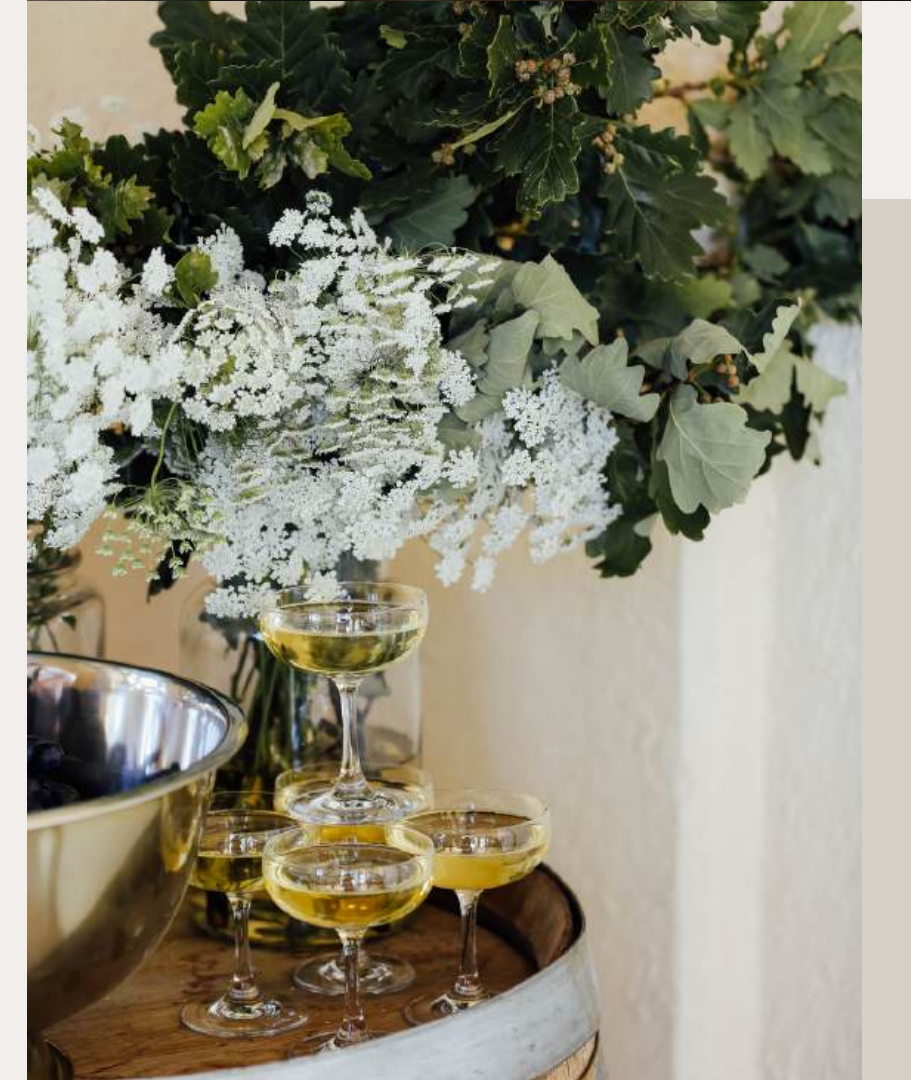


CATERING

Our in-house Executive Chef Luke provides outstanding reception dinners for up to 120 guests. We offer catering for on-farm guests including Welcome dinners, breakfasts, afternoon high-tea stands, and more options to make sure you do not have to worry about meals for your guests.

For larger events, a selection of local or Victoria-based caterers can be bought into the space and use our facilities on-site. Additional catering equipment may be required.

Please see our separate **food and drinks packages** for more information.



GETTING TO MOUNT WILLIAM STATION

DIRECTIONS



GETTING TO MOUNT WILLIAM

By Car

Mount William Station is located at 118 Mount William Estate Road, Willaura, Victoria.


By Train

Direct trains to Ararat run three times a day taking around 2hrs. A 30 min transfer from the station to the farm can be arranged upon request.

By Helicopter

There is a helicopter pad located on the property or multiple helicopters can be landed on the polo field. Enquire about helicopter transfer for the best rates available.





MOUNT WILLIAM STATION

PRICING OPTIONS



ACCOMMODATION & EVENT HIRE FEE

Our packages include your exclusive use of The Homestead, Shearers Quarters & all farm grounds across 1,100 acres for pre-dinners, the wedding ceremony, drinks parties, and the recovery. The on-site accommodation is inclusive.

	2026	2027
Weekend Rate Friday-Sunday <i>Recommended for large groups*</i>	\$32,500 3-nights \$25,500 2-nights	\$34,000 3-nights \$27,000 2-nights
Weekday Rate Monday-Thursday <i>Ideal for intimate weddings*</i>	\$21,000 2-nights \$16,000 1-night	\$23,000 2-nights \$18,000 1-night

*For groups above 150 guests or below 35 guests please enquire for pricing details.

*Prices exclude 10% GST

Off-Peak Season: Jun | Jul | Aug - 25% off
A 20% surcharge applies on Public Holidays.
Full Pre-payment discount \$1,500 (2 nights), \$2,000 (3 nights)

To secure your date, a deposit of 30% of the total is required.

MOUNT WILLIAM STATION

CONTACT

Nadia Wiener

events@mountwilliam.com

+61 493 3 244 31



MOUNT WILLIAM STATION

— SINCE 1842 —

THANK YOU FOR CHOOSING US.